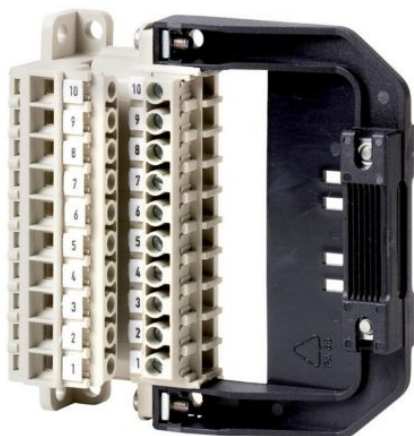


# Specifications



## Eaton 266705

Eaton Moeller series NZM - Molded Case Circuit Breaker. Control circuit plug unit for auxiliary contact

### General specifications

PRODUCT NAME	Eaton Moeller series NZM plug-in unit
CATALOG NUMBER	266705
MODEL CODE	NZM2-XSVHI
EAN	4015082667054
PRODUCT LENGTH/DEPTH	21 mm
PRODUCT HEIGHT	94 mm
PRODUCT WIDTH	78 mm
PRODUCT WEIGHT	0.12 kg
COMPLIANCES	IEC RoHS conform
CERTIFICATIONS	IEC/EN 60947
GLOBAL CATALOG	266705

## Product specifications

<b>10.10 TEMPERATURE RISE</b>	The panel builder is responsible for the temperature rise calculation. Eaton will provide heat dissipation data for the devices.
<b>10.11 SHORT-CIRCUIT RATING</b>	Is the panel builder's responsibility. The specifications for the switchgear must be observed.
<b>10.12 ELECTROMAGNETIC COMPATIBILITY</b>	Is the panel builder's responsibility. The specifications for the switchgear must be observed.
<b>10.13 MECHANICAL FUNCTION</b>	The device meets the requirements, provided the information in the instruction leaflet (IL) is observed.
<b>10.2.2 CORROSION RESISTANCE</b>	Meets the product standard's requirements.
<b>10.2.3.1 VERIFICATION OF THERMAL STABILITY OF ENCLOSURES</b>	Meets the product standard's requirements.
<b>10.2.3.2 VERIFICATION OF RESISTANCE OF INSULATING MATERIALS TO NORMAL HEAT</b>	Meets the product standard's requirements.
<b>10.2.3.3 RESIST. OF INSUL. MAT. TO ABNORMAL HEAT/FIRE BY INTERNAL ELECT. EFFECTS</b>	Meets the product standard's requirements.
<b>10.2.4 RESISTANCE TO ULTRA-VIOLET (UV) RADIATION</b>	Meets the product standard's requirements.
<b>10.2.5 LIFTING</b>	Does not apply, since the entire switchgear needs to be evaluated.
<b>10.2.6 MECHANICAL IMPACT</b>	Does not apply, since the entire switchgear needs to be evaluated.
<b>10.2.7 INSCRIPTIONS</b>	Meets the product standard's requirements.
<b>10.3 DEGREE OF PROTECTION OF ASSEMBLIES</b>	Does not apply, since the entire switchgear needs to be evaluated.

## Resources

<b>BROCHURES</b>	<a href="#">eaton-feerum-the-whole-grain-solution-success-story-en-us.pdf</a> <a href="#">eaton-digital-nzm-brochure-br013003en-en-us.pdf</a>
<b>CATALOGS</b>	<a href="#">eaton-digital-nzm-catalog-ca013003en-en-us.pdf</a>
<b>DRAWINGS</b>	<a href="#">eaton-circuit-breaker-circuit-nzm-mccb-3d-drawing.eps</a>
<b>ECAD MODEL</b>	<a href="#">DA-CE-ETN.NZM2-XSVHI</a>
<b>INSTALLATION INSTRUCTIONS</b>	<a href="#">eaton-circuit-breaker-plug-in-adapter-nzm2-il01219023z.pdf</a>
<b>INSTALLATION VIDEOS</b>	<a href="#">Introduction of the new digital circuit breaker NZM</a> <a href="#">The new digital NZM Range</a>
<b>TECHNICAL DATA SHEETS</b>	<a href="#">eaton-nzm-technical-information-sheet</a>

<b>10.4 CLEARANCES AND CREEPAGE DISTANCES</b>	Meets the product standard's requirements.
<b>10.5 PROTECTION AGAINST ELECTRIC SHOCK</b>	Does not apply, since the entire switchgear needs to be evaluated.
<b>10.6 INCORPORATION OF SWITCHING DEVICES AND COMPONENTS</b>	Does not apply, since the entire switchgear needs to be evaluated.
<b>10.7 INTERNAL ELECTRICAL CIRCUITS AND CONNECTIONS</b>	Is the panel builder's responsibility.
<b>10.8 CONNECTIONS FOR EXTERNAL CONDUCTORS</b>	Is the panel builder's responsibility.
<b>10.9.2 POWER-FREQUENCY ELECTRIC STRENGTH</b>	Is the panel builder's responsibility.
<b>10.9.3 IMPULSE WITHSTAND VOLTAGE</b>	Is the panel builder's responsibility.
<b>10.9.4 TESTING OF ENCLOSURES MADE OF INSULATING MATERIAL</b>	Is the panel builder's responsibility.
<b>FRAME</b>	NZM1, N1, NZM2(-4), N2(-4) NZM3(-4), N3(-4) NZM4(-4), N4(-4)
<b>ACCESSORY/SPARE PART TYPE</b>	Auxiliary conductor plug and socket device Accessory Other
<b>MOUNTING METHOD</b>	Plug-in unit
<b>CLIMATIC PROOFING</b>	Damp heat, cyclic, to IEC 60068-2-30 Damp heat, constant, to IEC 60068-2-78
<b>ISOLATION</b>	300 V AC (between the auxiliary contacts)
<b>AMBIENT OPERATING TEMPERATURE - MAX</b>	70 °C
<b>AMBIENT OPERATING TEMPERATURE - MIN</b>	-25 °C
<b>AMBIENT STORAGE TEMPERATURE - MAX</b>	70 °C
<b>AMBIENT STORAGE TEMPERATURE - MIN</b>	40 °C
<b>PROTECTION AGAINST DIRECT CONTACT</b>	Finger and back-of-hand proof to VDE 0106 part 100
<b>TERMINAL EQUIPMENT INCLUDED</b>	Screw connection

<b>DIRECTION OF INCOMING SUPPLY</b>	As required
<b>MOUNTING POSITION</b>	As required
<b>NUMBER OF POLES</b>	Three-pole/Four-pole
<b>TYPE</b>	Accessory. Auxiliary conductor plug device for plug technology
<b>SPECIAL FEATURES</b>	Auxiliary conductor plug connector for use with plug-in units NZM...-SVE and plug-in socket NZM...-XSVS to disconnect the cables of the installed accessories
<b>SHOCK RESISTANCE</b>	20 g (half-sinusoidal shock 20 ms)

<b>PROJECT NAME:</b>
<b>PROJECT NUMBER:</b>
<b>PREPARED BY:</b>
<b>DATE:</b>



**Eaton Corporation plc**  
Eaton House  
30 Pembroke Road  
Dublin 4, Ireland  
Eaton.com

© 2025 Eaton. All Rights Reserved.

Follow us on social media to get the latest product and support information.

