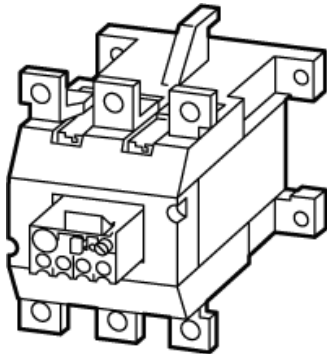


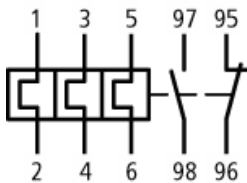
Type: **Z5-100/FF250**
 Article No.: **210071**
 Sales text **Overload relay Z5**



Phase failure sensitivity to IEC/EN 60947

Ordering information			
Setting range	I_r	$\times I_u$	50...250
Overload releases	I_r	A	70...100
Auxiliary contacts			
N/O = Normally open			1 N/O
N/C = Normally closed			1 N/C
For use with			DILM185 DILM225 DILM250
Short-circuit protection			
Type "1" coordination		A gL/gG	315
Type "2" coordination		A gL/gG	200

Contact sequence



Notes concerning the table header

Overload release: tripping class 10 A

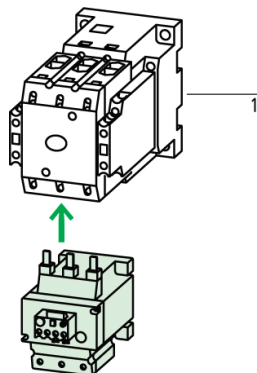
Short-circuit protection: Observe the maximum permissible fuse of the contactor.



Observe manual AWB2300–1476D/GB.

Notes concerning the product group

Fitted directly to the contactor



1 Contactor

→
208193

Accessories

→
254833

General

Standards			IEC/EN 60947, VDE 0660, UL, CSA
Climatic proofing			Damp heat, constant, to IEC 60068–2–78; Damp heat, cyclic, to IEC 60068–2–30
Ambient temperature			
Open		°C	–25...50
Enclosed		°C	–25...40
Temperature compensation			Continuous
Mounting position			Engineering selection data
Weights		kg	1.55
Mechanical shock resistance half-sinusoidal shock 10 ms to IEC 60068–2–27		g	10
Protection type			IP00
Protection against direct contact when actuated from front (IEC 536)			With terminal cover

Main conducting paths

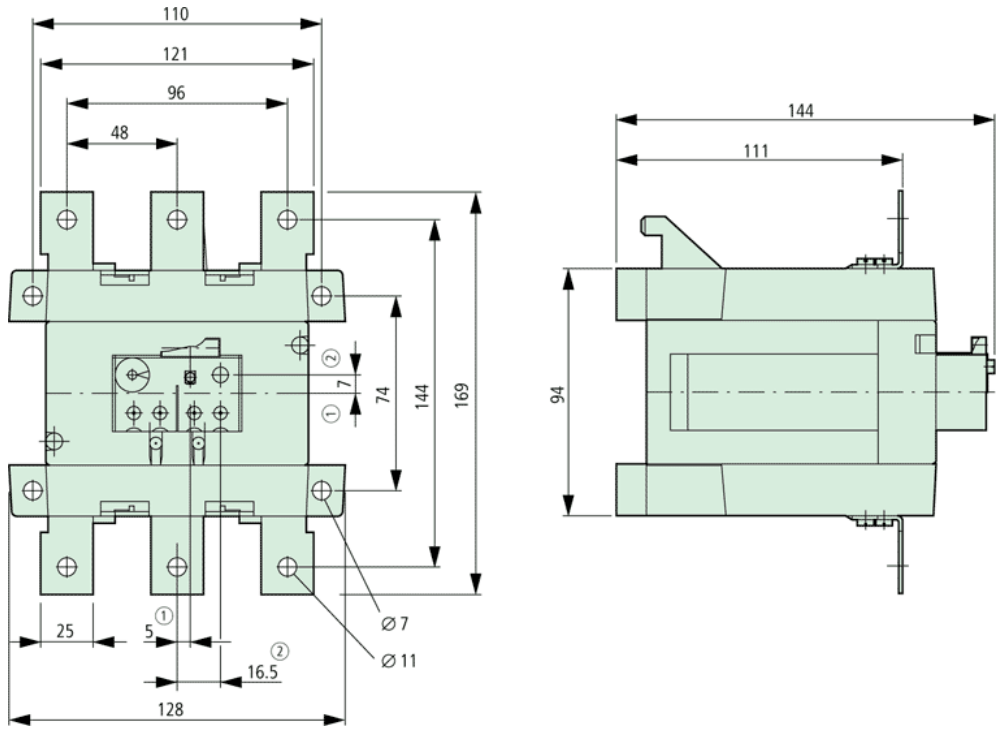
Rated impulse withstand voltage	U_{imp}	V AC	8000
Overvoltage category/pollution degree			III/3

Rated insulation voltage			
AC	U_i	V AC	1000
Rated operational voltage	U_e	V AC	1000
Safe isolation to VDE 0106 Part 101 and Part 101/A1			
Between auxiliary contacts and main contacts		V AC	440
Between main circuits		V AC	440
Overload release setting range		A	50...250
Temperature compensation residual error > 40°C		%/K	0.25
Short-circuit protection Maximum fuse			<u>210070</u>
Current heat loss (3 conductors)			
Lower value of the setting range		W	16
Maximum setting		W	28
Terminal capacities			
Flexible with cable lug		mm ²	95
Stranded with cable lug		mm ²	120
Solid or stranded		AWG	250 MCM
Flat conductor	Number of segments × width × thickness	mm	6 × 16 × 0.8
Busbar	Width	mm	20 × 3
Terminal screw			M8 × 25
Tightening torque		Nm	24
Tools			
Hexagon head spanner	SW	mm	13
Auxiliary and control circuits			
Rated impulse withstand voltage	U_{imp}	V	6000
Overtoltage category/pollution degree			III/3
Terminal capacities			
Solid		mm ²	2 × (0,75 – 4)
Flexible with ferrule		mm ²	2 × (0,75 – 2,5)
Solid or stranded		AWG	2 × (18 – 12)
Terminal screw			M3.5
Tightening torque		Nm	0.8 – 1.2
Tools			
Pozidriv screwdriver		Size	2
Standard screwdriver		mm	1 × 6

Rated insulation voltage	U_i	V AC	500
Rated operational voltage	U_e	V AC	500
Safe isolation to VDE 0106 Part 101 and Part 101/A1			
between the auxiliary contacts		V AC	240
Conventional thermal current	I_{th}	A	6
Rated operational current			
AC-15			
Make contact			
120 V	I_e	A	1,5
240 V	I_e	A	1,5
415 V	I_e	A	0,5
500 V	I_e	A	0,5
Break contact			
120 V	I_e	A	1,5
240 V	I_e	A	1,5
415 V	I_e	A	0,9
500 V	I_e	A	0,8
DC-13 L/R – 15 ms			
24 V	I_e	A	0,9
60 V	I_e	A	0,75
110 V	I_e	A	0,4
220 V	I_e	A	0,2
Short-circuit rating without welding			
max. fuse		A gG/gL	6

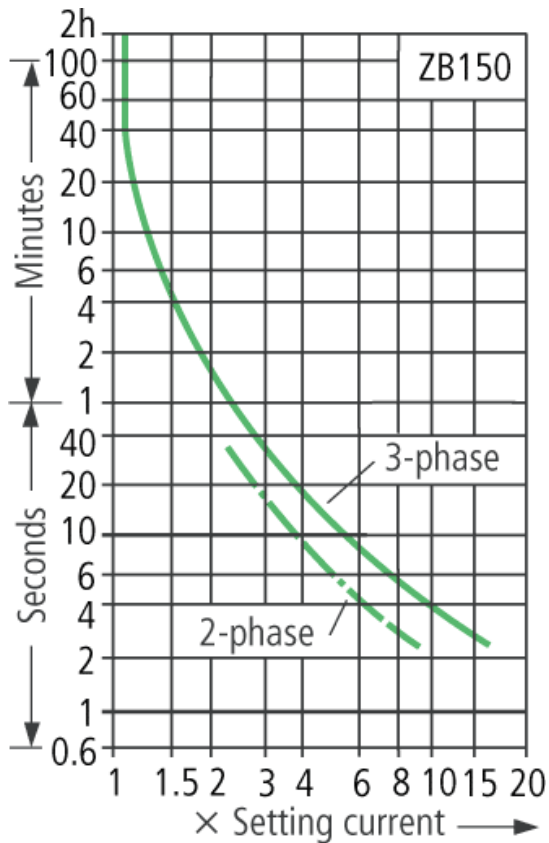
Notes			
Notes			<p>Ambient temperature: operating range to IEC/EN 60947, PTB: -5°C to +50°C</p> <p>Rated operational current: Making and breaking conditions to DC-13, L/R constant as stated</p> <p>See overlay: "Fuses" for short-circuit rating time/current characteristic (please enquire)</p> <p>Flat conductor terminal capacity: fixing with box terminal</p>

Dimensions



Overload relay greater than 150 A
 OFF
 Reset/ON

Characteristic curve



These tripping characteristics are mean values of the spread at 20 °C ambient temperature in a cold state. Tripping time depends on response current.
On devices at operating temperature the tripping time of the overload relay drops to approx. 25 % of the read value. Specific characteristics for each individual setting range can be found in the manual.

Moeller GmbH, Hein-Moeller-Str. 7-11, D-53115 Bonn
E-Mail: catalog@moeller.net, Internet: www.moeller.net, <http://catalog.moeller.net>
HPL-C2007G V2.1 © 2007 by Moeller GmbH