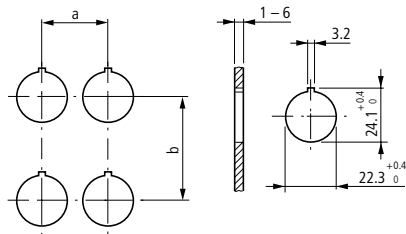
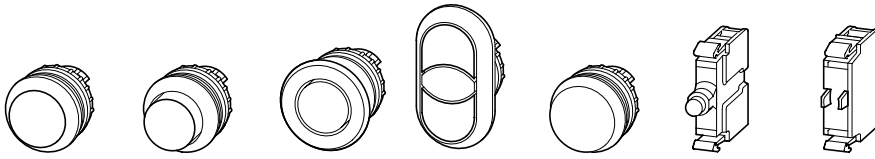
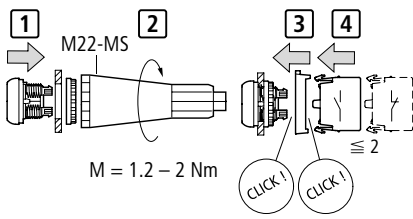


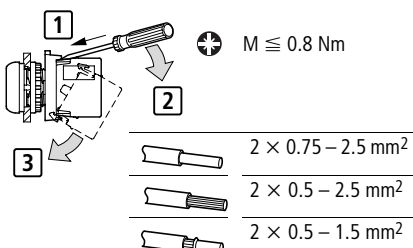
RMQ-Titan®
M22-..., M22S-...



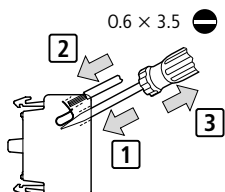
	a ≙ mm	b ≙ mm
M22-(S)-...(IEC/EN 60947)	30	50
	30	40
M22-D...+M22-T-D	33	40
M22-D(R)(P)...	38	40
M22-PV(L) + M22-PL-PV	48	56
M22-PV(L)(S...) + M22-D...	33	40
M22-DD...	30	55
M22-DD... + M22-T-DD	33	58
M22-ST...	30	50
M22-STDD...	30	75
M22-CK...	30	45
M22-CLED...	30	45
M22-XAK...	90	90
M22-XZK...	33	52
M22-XBK...	60	60
M22-XYK...	50	50
M22-CK11, 02, 20	30	50



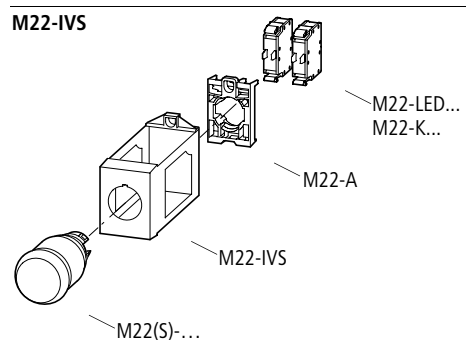
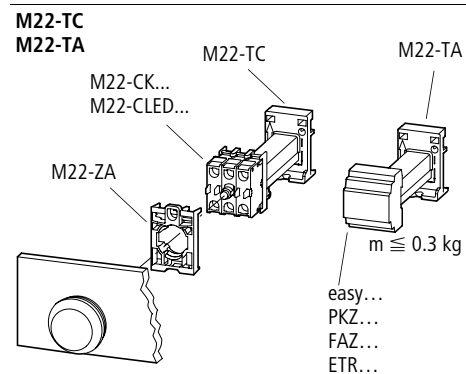
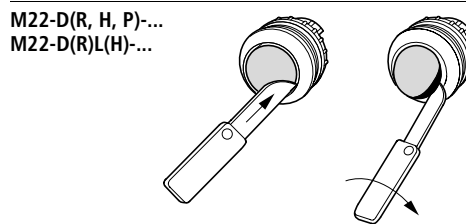
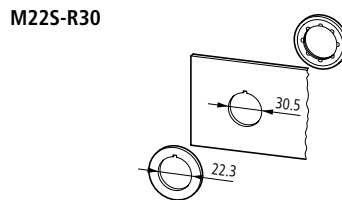
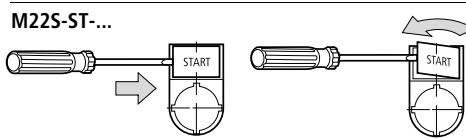
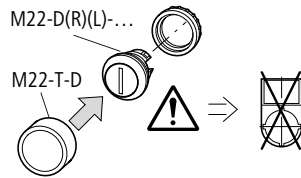
M22-K...
M22-LED..., f ~ = 50 - 60 Hz



M22-CK10, 01
M22-CLED..., f ~ = 50 - 60 Hz



M22-CK11, 02, 20 → 4/4



⚠ Lebensgefahr durch elektrischen Strom!
Nur Elektrofachkräfte und elektrotechnisch unterwiesene Personen dürfen die im Folgenden beschriebenen Arbeiten ausführen.

Electric current! Danger to life!
Only skilled or instructed persons may carry out the following operations.

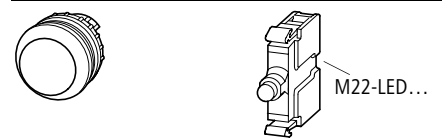
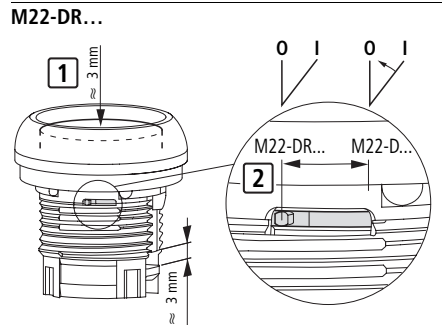
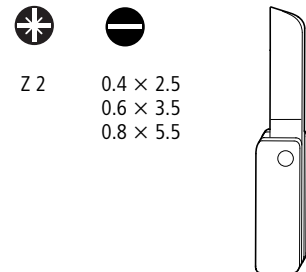
Tension électrique dangereuse !
Seules les personnes qualifiées et averties doivent exécuter les travaux ci-après.

Tensione elettrica: Pericolo di morte!
Solo persone abilitate e qualificate possono eseguire le operazioni di seguito riportate.

¡Corriente eléctrica! ¡Peligro de muerte!
El trabajo a continuación descrito debe ser realizado por personas cualificadas y advertidas.

Электрический ток! Опасно для жизни!
Только специалисты или проинструктированные лица могут выполнять следующие операции.

触电危险!
只允许专业人员和受过专业训练的人员进行下列工作。



M22-L(H)-...	-R	-R
M22-D(R)(L)(H)-...	-G	-G
M22-W(R)(L)(K)-...	-W	-W
	-Y	-W
	-B	-W, -B

Environmental Ratings for M22(S)...Operators

Operator Part Numbers	UL/NEMA	IEC
M22-...	4 X, 13	IP66
M22-ST...		(IP67)
M22-XAK...		
M22-XZK...		
M22-XKB1		
M22-XYK1		
M22-DD...	3 R, 12	IP66
M22-AMC		IP40

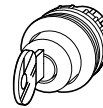
M22-W(R)...



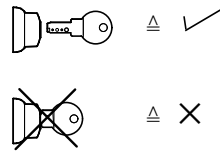
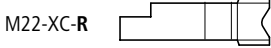
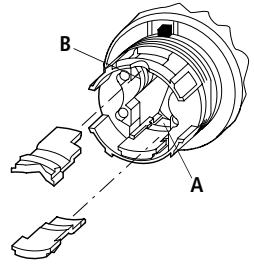
M22-W(R)K...



M22-W(R)S...



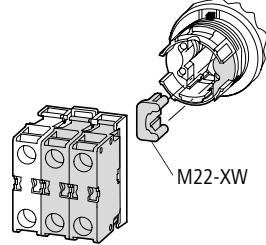
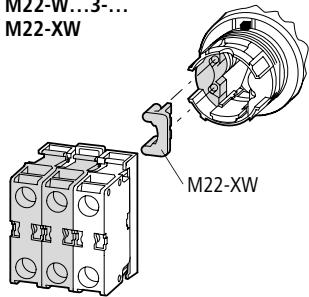
M22-XC...



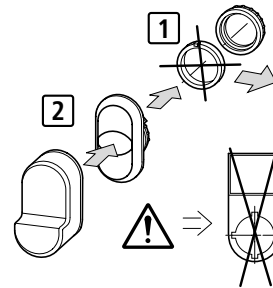
	O	I	B
60°	✓	-	✓
50°	✓	✗	✗
40°	✓	✗	✗

		I		O	H	
		A			B	
60°	60°	-	✓	✓	-	✓
50°	50°	✗	✗	✓	✗	✗
60°	50°	-	✓	✓	-	✗
50°	60°	✗	✗	✓	-	✓
40°	40°	✗	✗	✓	✗	✗
60°	40°	-	✓	✓	-	✗
50°	40°	✗	✗	✓	✗	✗
40°	60°	✗	✗	✓	-	✓
40°	50°	✗	✗	✓	-	✗

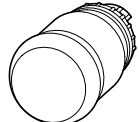
M22-W...3-...
M22-XW



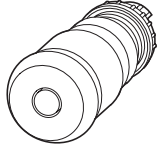
M22(S)-DD(L)-... + M22-T-DD



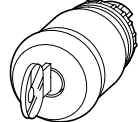
M22-PV...



M22(S)-PV



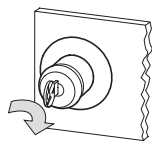
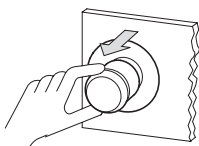
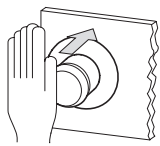
M22-PVL



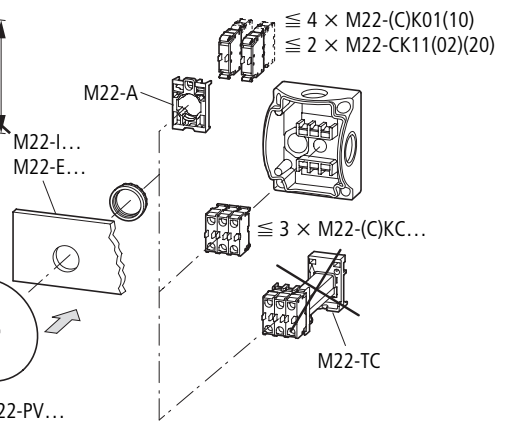
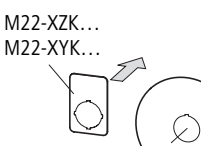
M22-PVS



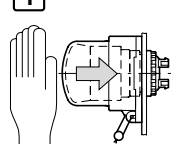
M22-PV(LT)



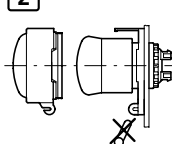
M22S-ST-X



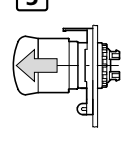
1 M22-PL-PV



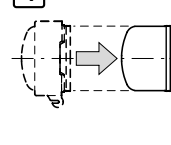
2



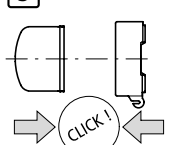
3



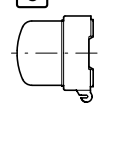
4



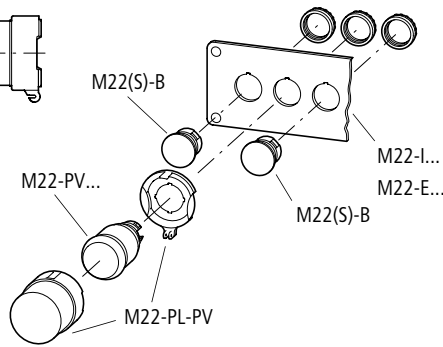
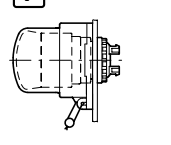
5



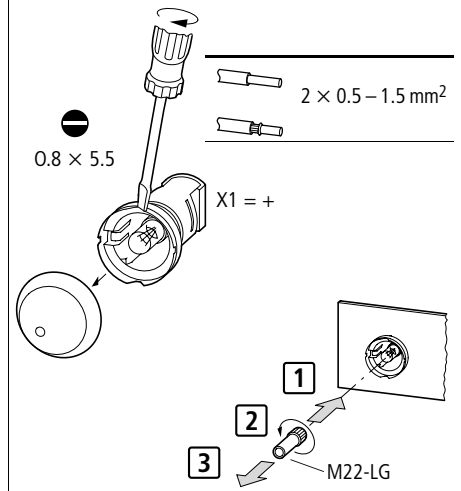
6



7



M22-AMC
M22-LC(H)



04/07 AWA1160-1745

M22(S)WR4



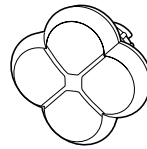
M22-WJ(R4)4



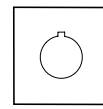
M22-WR(K)4



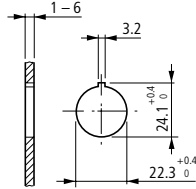
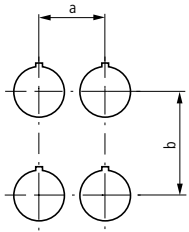
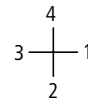
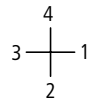
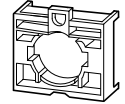
M22-D4...



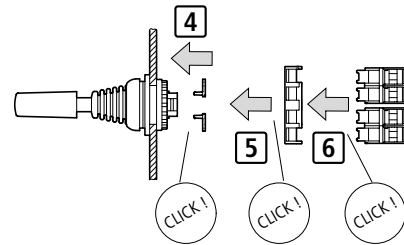
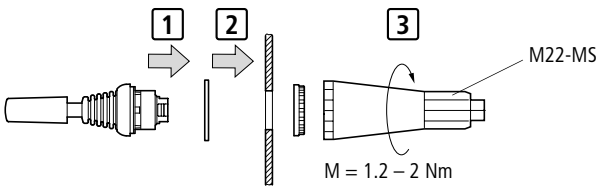
M22-XCK



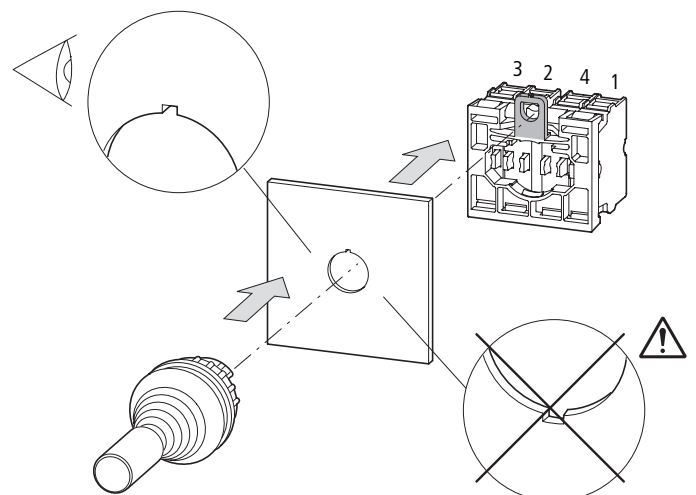
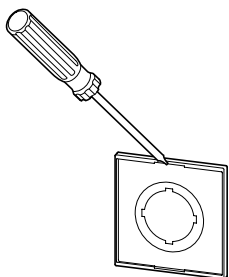
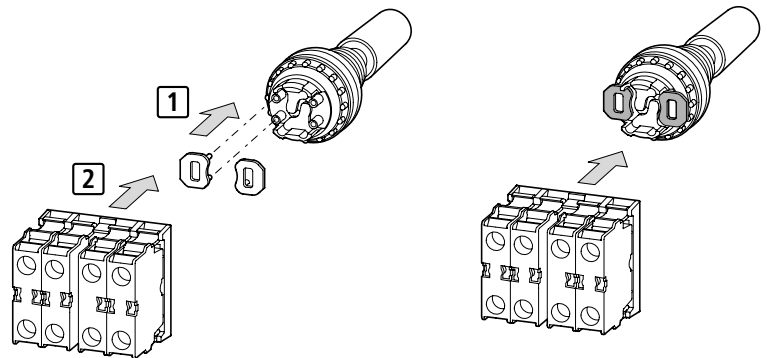
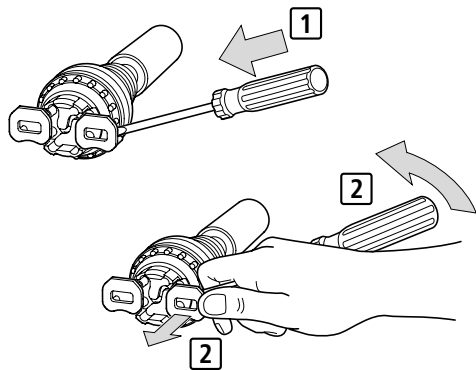
M22-A4



	a ≙ mm	b ≙ mm
M22(S)WR4	45	50
M22(S)W(R)J4	45	50
M22(S)W(R)K4	45	50
M22(S)-D4-...	55	55
M22-XCK...	50	50



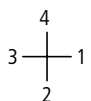
04/07 AWA 1160-1745



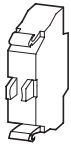
M22(S)WR4
M22-WR(K)4



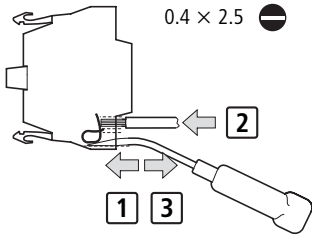
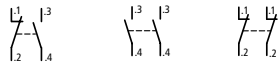
M22-WJ(R4)4
M22-D4...



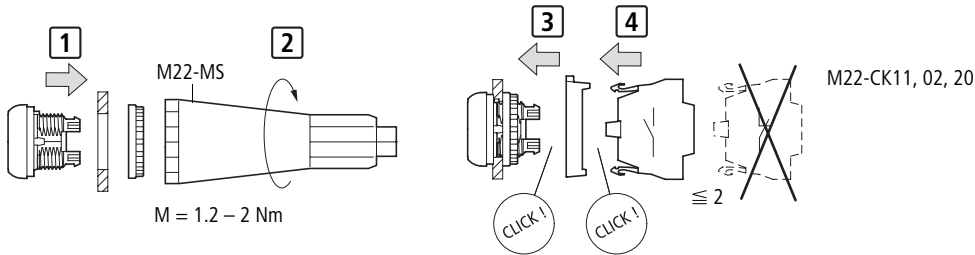
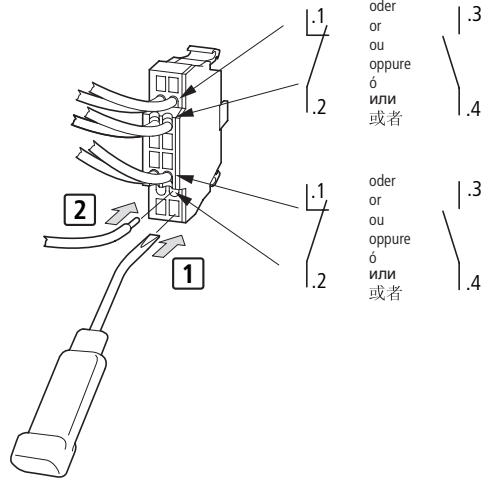
M22-CK11, 02, 20



...CK11 ...CK02 ...CK20



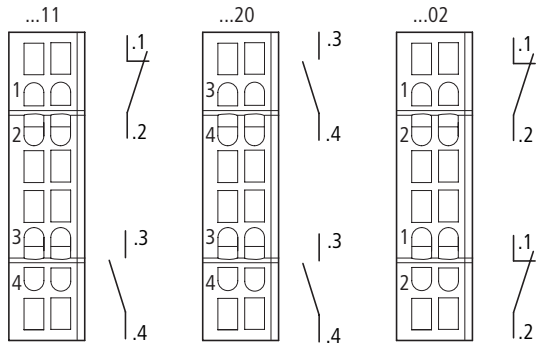
	2 × 0.5 – 1.5 mm ²
	2 × 0.5 – 1.5 mm ²
	2 × 0.5 – 1 mm ²



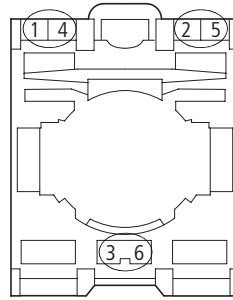
M22-CK11, 02, 20 → ~~M22-ABC(4)~~

Ordnungsziffern – Reference numbers – Ordinales – Numeri di riferimento – Ordinales – Справочные номер – 参考编号

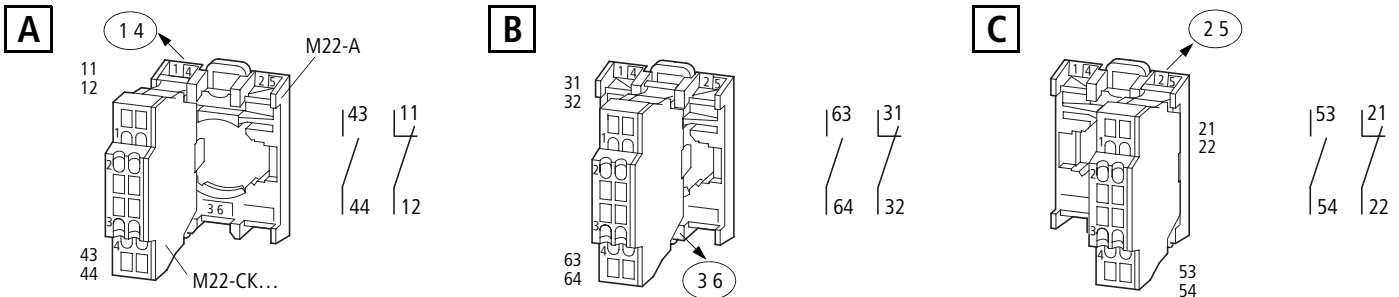
M22-CK...



M22-A



Beispiel – Example – Exemple – Esempio – Ejemplo – Пример – 举例



M22-A → 1 } 11, 12
M22-CK → 1, 2 }

M22-A → 4 } 43, 44
M22-CK → 3, 4 }