

Update Service for EASY-SOFT

If you have installed EASY-SOFT version 5.10 or higher, or EASY-SOFT V6.00 Basic or higher, the installation of a software update is no longer started via the Moeller website, as was previously the case. The new EASY-SOFT Update Service offers the following benefits:

1. Simplified installation of the latest applicable version.
2. The service only offers you updates that are suitable for your installed version. This prevents an EASY-SOFT-Pro version from being changed to an EASY-SOFT Basic version.

Note

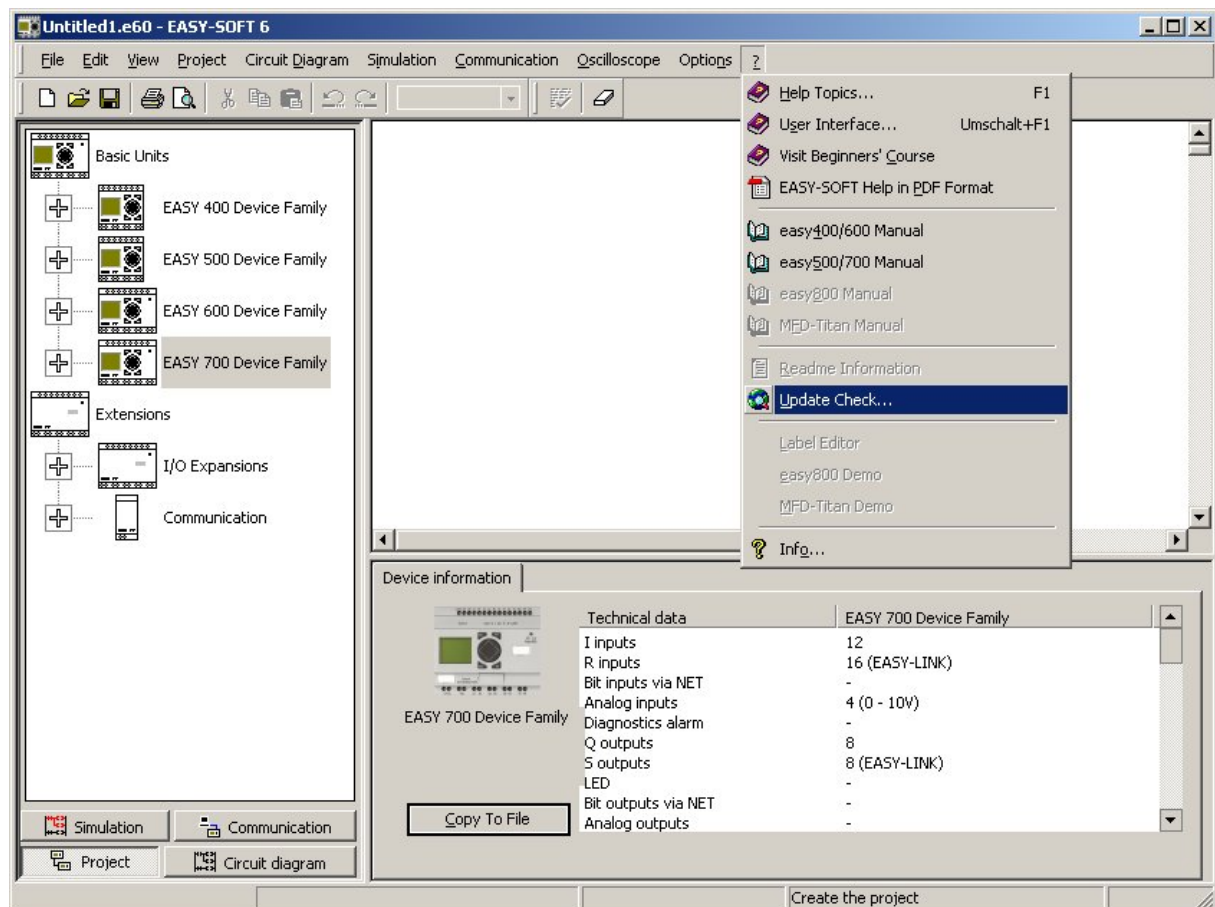
You **cannot** use the Update Service if, for example, you are running EASY-SOFT version 5.0x (x=0,1 or 2). Install the EASY-SOFT 5.10 version beforehand via the Moeller website.

The following methods are available for you to activate the Update Service. An active Internet connection is required for both methods.

1. If EASY-SOFT is **already launched** and you choose ? -> **Update Check....**
2. If EASY-SOFT is **not** launched already and you activate the Update Manager via the **Windows Start Bar -> Program Updates.**

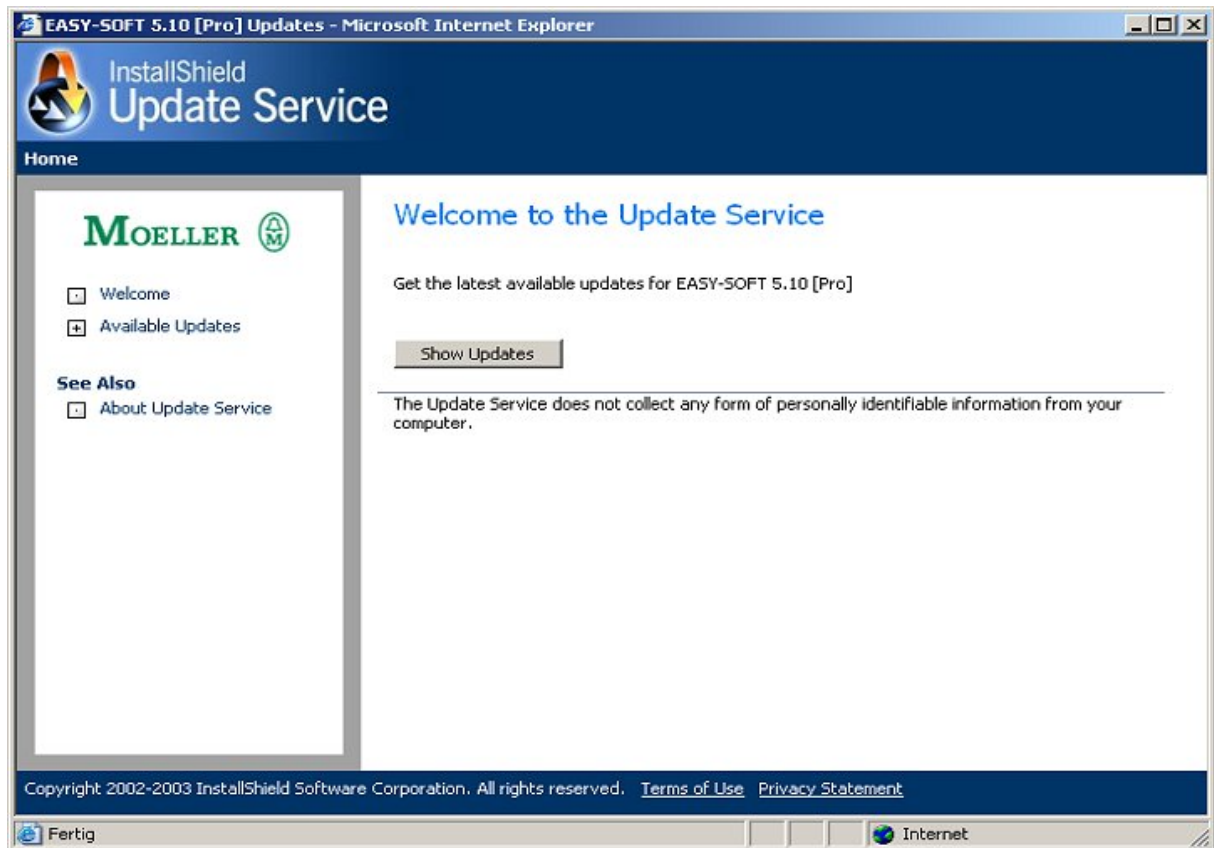
Method 1

If EASY-SOFT is already launched and you choose ? -> **Update Check....** .



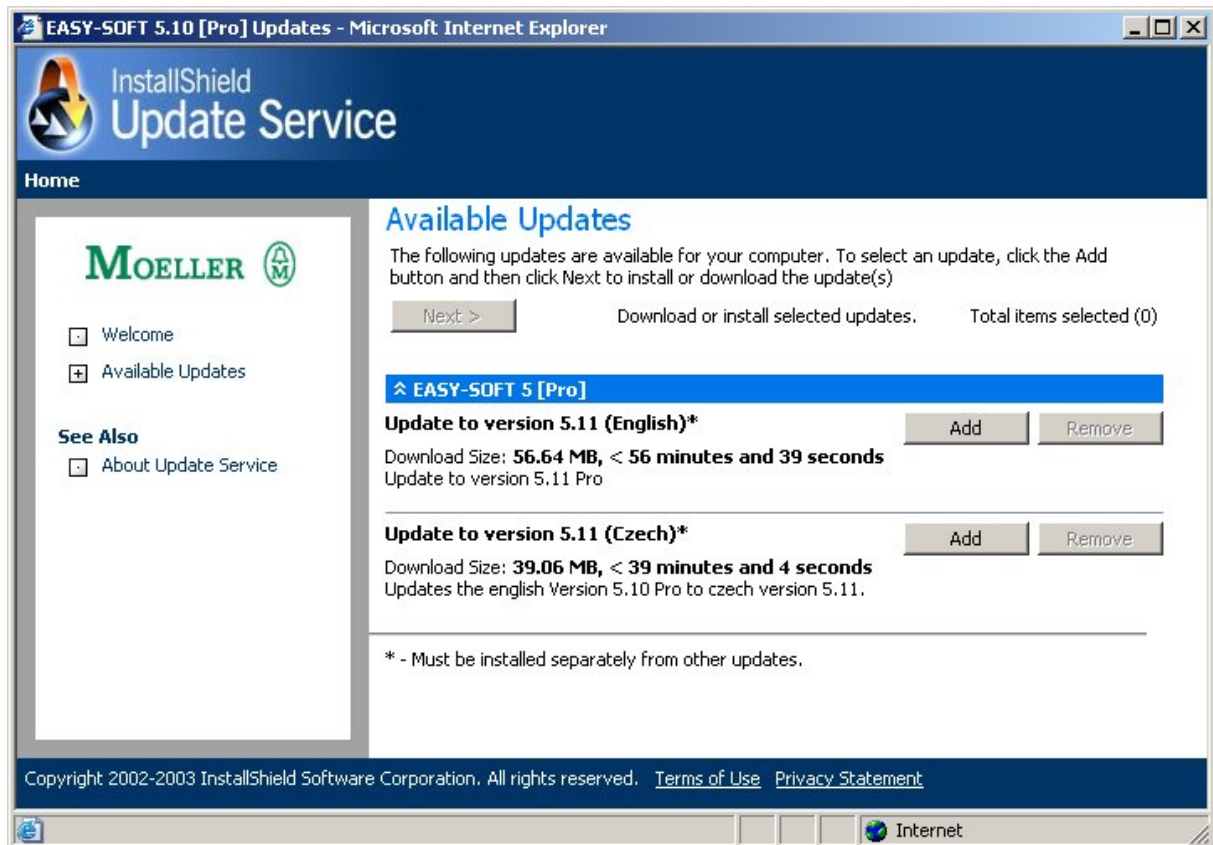
► Activate the **Update Check** function.

This will open the following dialog:



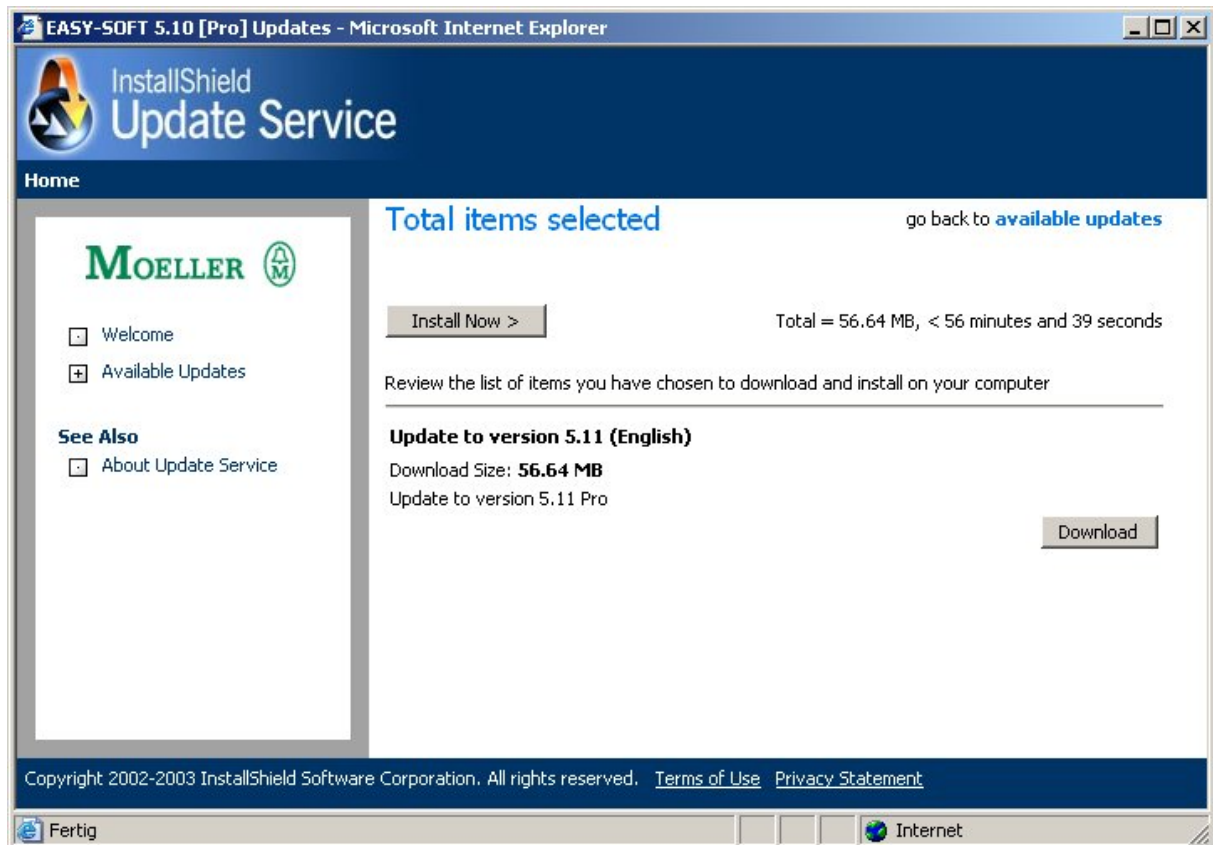
► Click the **Show Updates** button.

This will open the following dialog:



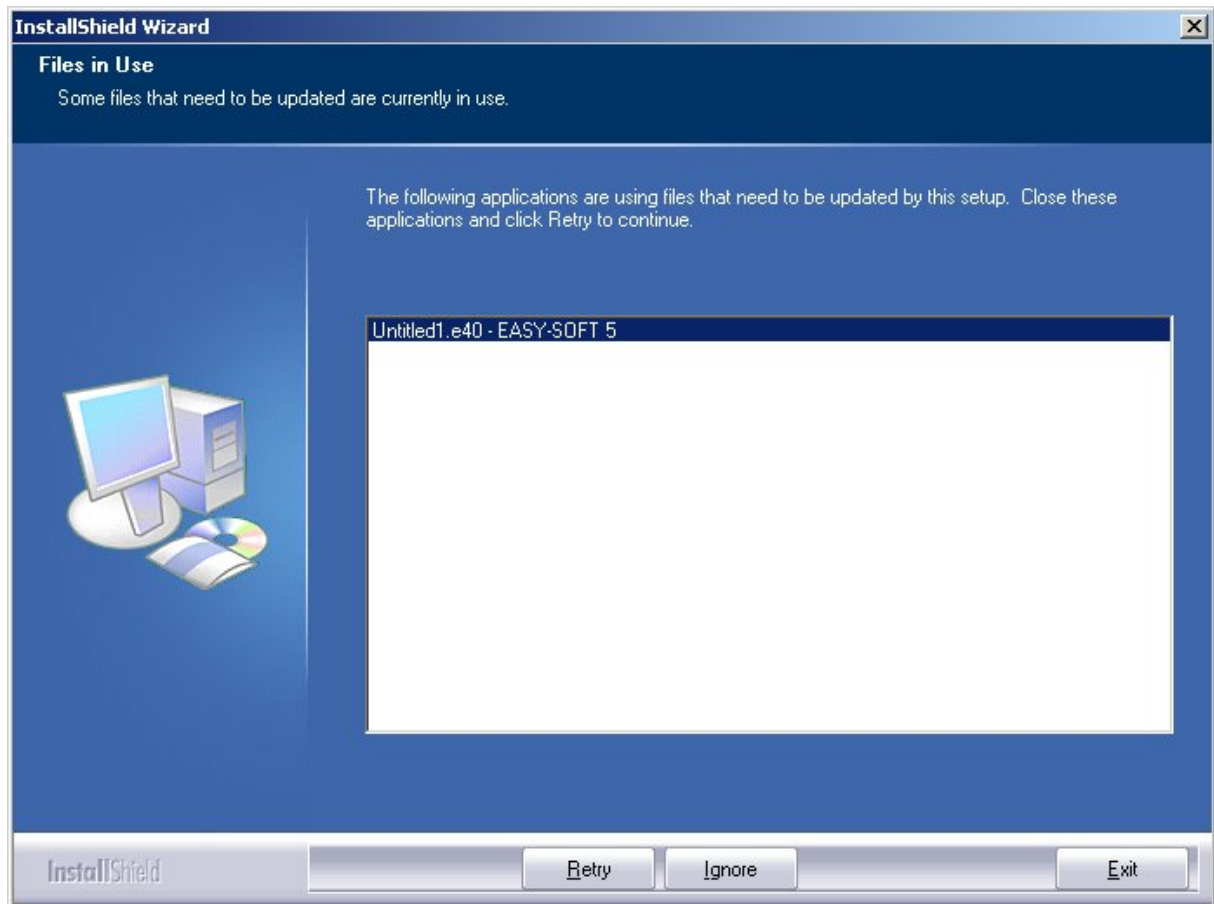
► Click the **Add** button.
This will activate the **Next >** button.

► Click the **Next** button.
This will open the following dialog:



This dialog provides the user with two functions.

1. The **Download** button activates the download of the new EASY-SOFT version. You can define beforehand the folder in which the compressed EXE file (e.g.: EASY-SOFT_601_BasicD.exe) is to be saved. You must then close the previous EASY-SOFT version and then run this EXE file in order to install the actual update.
2. The **Install Now >** function means that the download and the subsequent installation are carried out in one go. The following dialog will appear as the previous EASY-SOFT version is automatically deleted during the installation although it is still currently active:



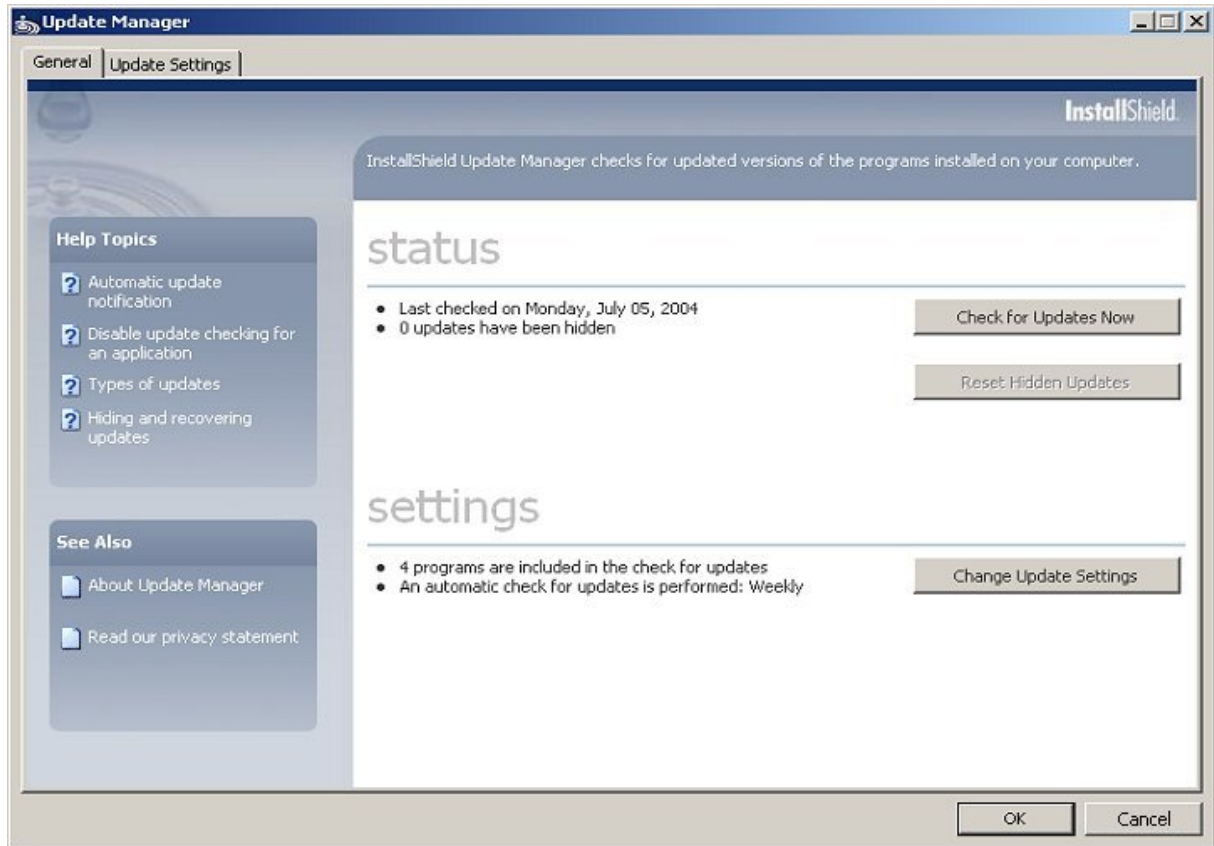
The **Files in Use** dialog indicates that you should close the previous version of EASY-SOFT first and then click the **Retry** button.

► Follow the instructions that appear in the dialog during the remaining installation steps.

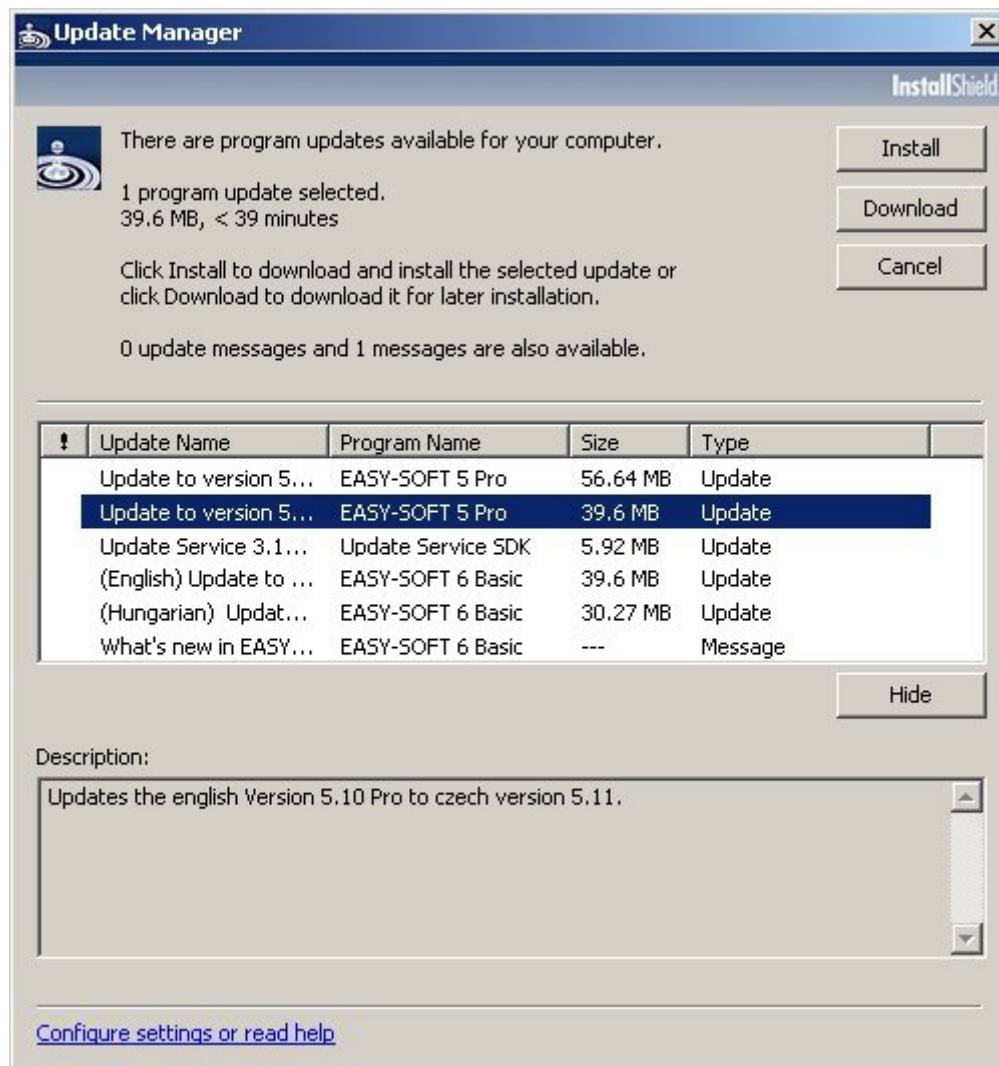
Method 2

If EASY-SOFT is **not** launched already and you activate the Update Manager via the **Windows Start Bar -> Program Updates**.

This will open the following dialog:



► Click the **Check for Updates Now** button.
This will open the following dialog for the latest software updates.



This dialog provides you with two functions that have the same behaviour in the following points:

1. The **Download** function activates the download of the new EASY-SOFT version as a compressed EXE file to the following folder (**Documents and Settings\UserName\My Documents**).
 - ▶ You must then close any versions of EASY-SOFT that are running
 - ▶ Click the **Downloaded Program Updates** icon on the user interface to activate the EXE file.

This will install the appropriate update.
2. The **Install** function means that the download and the subsequent installation are carried out in one go.
 - ▶ Follow the instructions that appear in the dialogs during the remaining installation steps. The Update Manager will close once the installation has been successfully completed.

Both functions have the following identical features:

1. The compressed EXE file (e.g.: EASY-SOFT_601_BasicD.exe) is always stored in the folder (**Documents and Settings\UserName\My Documents**).
2. You can access this folder via the **Downloaded Program Updates** icon.

► Once installation has been successfully completed with one of the above-mentioned functions you can delete the **Downloaded Program Updates** folder.

Note

If the Update Manager does not display an Update message, this means that the latest EASY-SOFT version is already installed.